



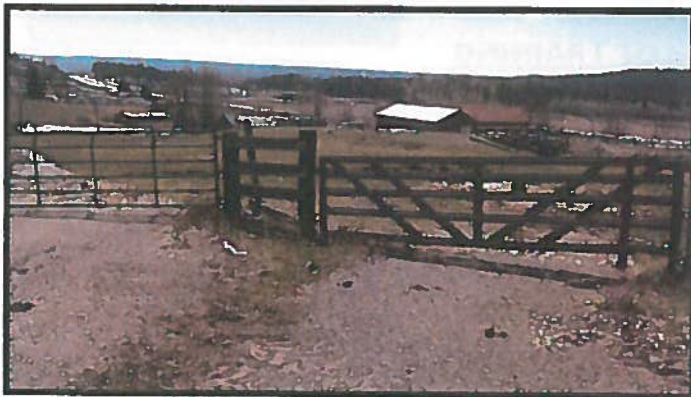
CCATEC NEWS

Cariboo Chilcotin Aboriginal Training Employment Centre

205-197 North 2nd Avenue, Williams Lake, BC V2G 1Z5

Prepared By Bridget Rosette

SUGAR CANE DEVELOPMENT RANCHING



Sugarcane Development Corporation

This Ranch Training program was the first in its kind that CCATEC has received. This program is 7 months long and the two trainees will be given the tools and hands on experience to work in the ranching industry. The trainees will learn animal care management, feeding livestock, branding and vaccinating livestock, irrigation, fencing, and farming.

INSIDE THIS ISSUE

INDIVIDUAL CLIENTS	2
TRAINING ON THE JOB PROGRAM	3
CCATEC SPONSORED PROGRAM COMMUNITY CORNER	4
CCATEC CENTRALIZED PROGRAM	5
EMPLOYMENT ASSISTANCE SERVICES	6
YOUTH CONFERENCE CALL FOR PROPOSAL DEADLINE DATES	7
MINIMUM WAGE	8

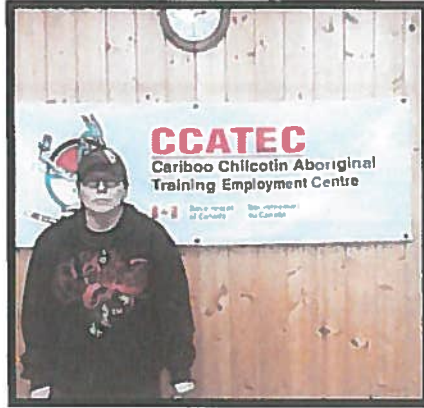


Government of Canada

Gouvernement du Canada



Employment Assistance Services Individual Clients



Kelly Case
Class 1 Drivers
Employed



Denise Swampy
Human Services
Employed



Tapanga McCabe
Indigenous Digital Filmmaking
In Progress

CORA MUELLER-BLACKWELL - INDIVIDUAL CLIENT

PILOT TRAINING



In this 20 week program Cora was required to take 50 hours professional pilot training on float equipped aircraft. This refresher course when completed, will provide her with a commercial airline pilot licence and she will have the skills to re-enter the workforce as a commercial pilot!



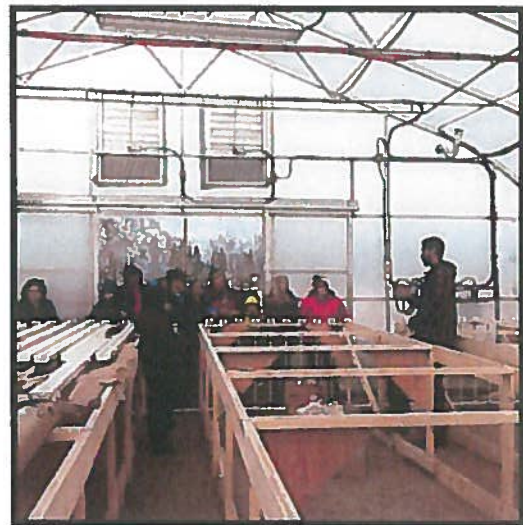
YUNESIT'IN GOVERNMENT TRAINING ON THE JOB

Greenhouse Operator

Tiffany Haines was the trainee for the Greenhouse Assistant, it was a 12 week employment program and Tiffany was hired upon completion. Training included knowledge of the irrigation systems, forecast production, co-develop of work plans and monitoring of the crops.



Chief Russell



CCATEC CENTRALIZED PROGRAM

TRAFFIC CONTROL & FIRST AID LEVEL 1



The 15 trainees received employment skills in the traffic control field including using traffic control equipment, setting up, maintaining and removing work zones, and first aid level 1.

All 15 completed with 8 employed and 2 returned to school or training.

Community Corner



XENI GWET'IN FIRST NATION

Nemiah Valley is located approximately 196.8 km North West of Williams Lake. It is the home of the Tsilhqot'in people of the Xení Gwet'in.

The people of Xení are strong in their culture and traditional ways. They live off the land and they speak their language fluently.

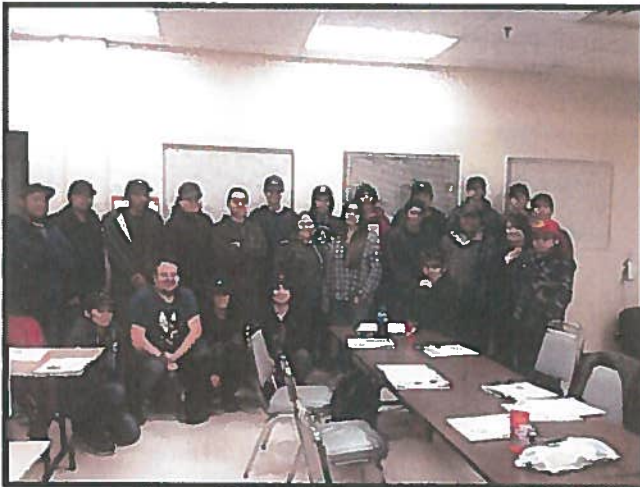


CCATEC CENTRALIZED PROGRAM

WILDLAND FIRE FIGHTING

CCATEC delivered three wildland fire fighting programs with trainer Sean O'Neil. They were held at Williams Lake, Quesnel and Anaham, each program had 20 seats. We had an overwhelming amount of applications for each program.

Many trainees from all three programs have found employment with fire season upon us.



Williams Lake



Quesnel



Anaham



Employment Assistance Services

Below is a list of Employment Assistance Services available:

CCATEC

Provides services to the Williams Lake area

Heather Camille

Ph: 250-392-2510 ext.6

Email: h.camille@ccatec.com

NAZKO BAND

Provides services to Nazko

Bernice Cremo

Ph: 250-992-9085 ext. 215

:250-249-9605 on reserve

Email: bernicecremo@nazkoband.ca

WILLIAMS LAKE BAND

Provides services to Williams Lake Band area

Shawna Philbrick

Ph: 250-296-3507 ext. 135

Email: shawna.philbrick@williamslakeband.ca

CANIM LAKE BAND

Provides services to the Canim Lake Band area

Lesley Paul

Ph: 250-397-2227

Email: eas2@canimlakeband.com

SODA CREEK BAND

Provides services to Soda Creek Band area

Lisa Bremner

Ph: 250-989-2323 ext.115

Email: employment@xatsull.com

TSILHOOT'IN NATIONAL GOVERNMENT

Provides services to Tl'etinqox-T'in Gov't (Anaham), Alexis Creek Band, Xenigwet'in, TNG, Yunesit'in Gov't (Stone), Toosey, and Alexandria

Loni Solomon

Ph: 250-392-3918

Email: employment@tsilhqotin.ca

Red Bluff

Provides services to the Red Bluff Band area

Alicia Evans

Ph: 250-397-2227

Email: alicia@lhtako.com

KLUSKUS BAND

Provides services to Kluskus Band

June Baptiste

Ph: 250-992-3290

Email:

QUESNEL TILLICUM SOCIETY

Provides services to the Quesnel area

Karima Beaucage

Ph: 250-992-8347

Email: karima.beaucage@qnfc.bc.ca

ESK'ETEMC

Provides services to Alkali Lake

Bettina Johnson

Ph: 250-440-5611

Email: economicdevelopment@sxonomic.ca

ULKATCHO BAND

Provides services to Ulkatcho

Nadine Charleyboy

Ph: 250-742-3260

Email: n_charleyboy@hotmail.com

CANOE CREEK BAND

Provides services to Canoe & Dog Creek areas

Chasity Harry

Ph: 250-440-5645

250-459-5647 ext. 235

Email: sdfinance@canoecreekband.ca



Chasity Harry — Canoe Creek



*Mark your
calendars*



CCATEC's YOUTH CONFERENCE

**"EMPOWERING OUR YOUTH
IN THE 21ST CENTURY"**



November 13 - 16, 2018

Coast Inn, Kamloops

CCATEC CALL FOR PROPOSALS

Deadline Date for \$20,000.01 & Over:

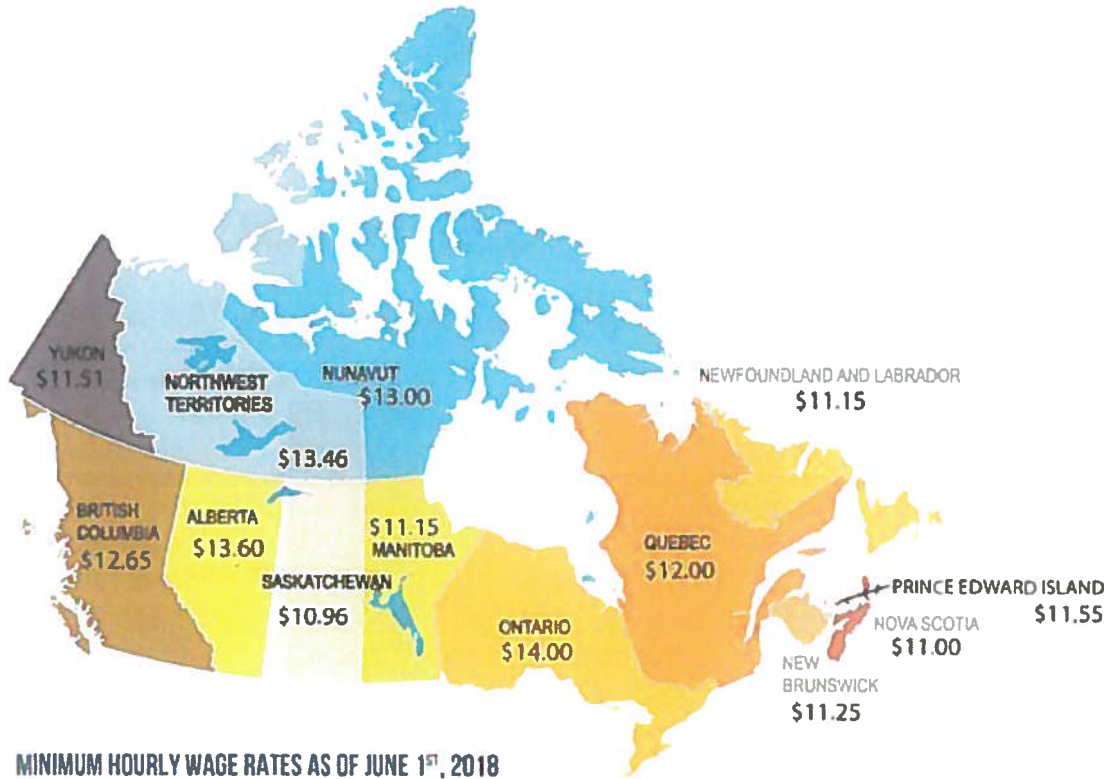
October 5, 2018

Note:

*** Proposals \$20,000.00 and under can be submitted to CCATEC at any-time.**



Minimum Wage by Province



MINIMUM HOURLY WAGE RATES AS OF JUNE 1ST, 2018

Retail Council of Canada
www.retailcouncilofcanada.org

Need a Social Insurance Number??

To apply on line go to

<https://www.canada.ca/en/employment-social-development/>



**Dreams and Dedication
are a Powerful Combination**
William Longgood

